

Volunteer Ministry Center

2015 Annual Report



A Message from the Chief Executive Officer



Locking doors are a privilege. If you don't have physical locking doors, you will make mental locking doors, as exemplified by the 'bag lady' who appears oblivious to those around her in public. Mental doors are a form of 'sanity', not insanity...people cannot safely open locked mental doors until there are safe physical doors to replace them."

Kirsten Anderberg

At a recent birthday luncheon at Minvilla Manor, one of the residents said that he had a special announcement and would like to share it with the community.

Every month two VMC Board of Directors host a birthday luncheon and celebration for the residents at Minvilla Manor, our permanent supportive housing opportunity for former chronically homeless individuals. All residents are invited and those with birthdays that month are recognized and celebrated with a birthday cake and small gift.

James (not his real name) said that he had a special and particularly meaningful announcement that he wanted to share with his fellow residents.

Standing before his peers, he said that for the first time in over ten years, he had just talked to his family and would be visiting them within the next day or so. Almost in tears, he added, "I just want you to know how happy that makes me and I am thankful for this place." For a moment, he had some of us in tears as well.

The work of the Volunteer Ministry Center is definitely about ending and preventing homelessness. However, another important outcome is the work of helping people connect or reconnect with family members and/or find a community that supports and loves them.

Throughout its history of nearly 30 years, VMC has been a distinguished community partner in the community's effort to prevent and end homelessness. VMC also has a reputation of providing compassionate services to its "neighbors."

The use of "neighbor" is very purposeful. We are serving our local neighbors. We know that 74% of those receiving services in our community had a last known address either in Knox County or one of the surrounding counties.

Neighbor is also used as a sign of welcome and hospitality. It is important that we provide an inviting and friendly place in order to offer a hope that is real and practical.

For many other individuals, like James, the therapeutic value of being connected with others and living in a community is as much of a tool for recovery as mental health and addiction disorder treatments. Having a closed door, as Kristen Anderberg suggests, indeed makes a difference. Home is both a place to close a door and a space where one is loved and has the opportunity to love as well.

This 2015 Annual Report, I trust, will give you insight and information regarding the fiscal stewardship and accountability to which we are committed. Also, the intent is to share how your investment is making a difference in the lives of our neighbors.

Many thanks for your generous and committed giving and support during the year of 2015. If you are new to VMC, give us a call or come by for a visit. We will be glad to introduce you to the work of ending and preventing homelessness.

Sincerely, and Peace,

Bruce W. Spangler
Chief Executive Officer

A Message from the Chairman of the Board



There, but for the grace of God, go I.

If you are like me, you have probably had that thought when you have seen our neighbors on the street, downtown, or at an interstate off ramp. And, many of us at one time or another in our lives may have been one broken-down car, one major medical illness, or one missed job opportunity away from being one of those on the street who are being helped at Volunteer Ministry Center's Resource Center, Dental Clinic, Minvilla Manor, or the Bush Family Refuge.

I have the privilege and honor to serve as the Chair of the Board of Directors of VMC. I have the opportunity to see our staff and volunteers provide help to our neighbors who are often in desperate need. And I can tell you that their efforts to prevent and end homelessness work. Our neighbors are treated with compassion while at the same time are held accountable for their own efforts to remain in their homes or achieve housing.

Folks who come to the Bush Family Refuge are often in danger of losing their homes because they are behind in their rent or utilities or both. They are coming face to face with the prospect of living in their cars or on the street. For most of them that is a terrifying prospect. But, at VMC they find caring people who are ready to help them avoid the calamity of homelessness. Those who come to our Dental Clinic seek treatment for dental problems that can easily lead to serious medical problems. Our professional volunteers are there to provide the needed care and treatment.

The staff and volunteers at VMC who work with our neighbors in the Resource Center truly change lives by helping our neighbors leave the streets and achieve housing. Those who need additional levels of care and attention are helped by the staff and volunteers at Minvilla Manor.

You, our wonderful donors, provide the key for VMC to assist the homeless and those trying to avoid homelessness. Without your generous financial support, VMC could not fulfill its mission of preventing and ending homelessness. For that we are most grateful.

Thank you so much!

A handwritten signature in black ink that reads "John T. Buckingham".

John T. Buckingham
Chairman of the VMC Board of Directors

2016 Board of Directors

Jerry Askew
John Buckingham
Emily Norman Cox
Charlie Daniel
Robert DeNovo, Jr.
Stephanie Durman
Mack Gentry
Craig Griffith
Barbara Hillard
Tom Hodge
Carney Ivy
Deborah G. Jones

Bob Joy
Ken Knight
Warren Payne
Fred Perkinson
Hunter Purnell
David Rausch
Mintha Roach
Martin Roberson
Clif Tennison
Neill Albers Townsend
Carl Van Hoozier, Jr.

Our Programs — *How You Helped Volunteer*

Our Mission

“Our mission is to facilitate permanent supportive housing for those who are homeless and to provide services to prevent homelessness.”

The Bush Family Refuge

Staffed primarily by trained volunteers, the Refuge sees individuals and families who are at risk of losing their housing. It provides counseling that can lead to housing sustainability as well as a small amount of financial assistance for rent and utility bills for those in crisis. Additionally, the Refuge can help with procuring eye doctor appointments, eyeglasses, prescription medications, clothing, furniture, etc. It also makes referrals to other agencies and services as appropriate. Each individual is seen in a private interview setting and confidentiality is maintained.



Volunteers and Interns are what keep operations going in the Bush Family Refuge.

2015 Bush Family Refuge Statistics

- 762 individuals and families helped with utilities
- 97 individuals and families helped with rent
- Total of 2,498 individuals and families assisted with other needs

The VMC Dental Clinic

Housed in our building, the VMC Dental Clinic uses professional dental clinicians to provide dental care and treatment to the indigent. Services are geared toward restoring dental health and extractions are provided only as a last resort. A

2015 Dental Clinic Statistics

- 933 patient visits
- 1,429 procedures were performed
- 52 sets of dentures were provided

volunteer hygienist is also available to provide cleanings to individuals who may have never had their teeth cleaned professionally. The VMC Dental Clinic is open two half days a week.



Dr. Sarah Dugger works to improve the smile of a patient.

The Resource Center

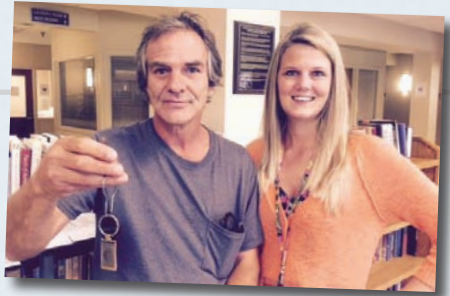
Offering a transitional day program for the homeless, the Resource Center is a case management program which assists people in their efforts to work their way out of homelessness.

2015 Resource Center Statistics

91 people achieved housing during the course for the year. They join the 708 who have been previously placed. Our housing retention rate is near 94% measured after one year of housing. (The national average is 85%.)

Every member is assigned a case manager who works with them to overcome barriers to

housing and self-sufficiency. When housing is achieved, the case manager remains involved until true independence is achieved. Various classes, a meal program, showers, laundry facilities and social activities are also offered as part of the programming. All members are held accountable to their plan and are expected to complete all the janitorial work required to keep the Resource Center area clean and organized.



Chris proudly shows the keychain presented to him by Case Manager Opal King

Minvilla Manor

VMC's housing development, Minvilla Manor, accepts project based vouchers which insures a high level of occupancy. The 57 apartments are each inhabited by a former chronically homeless and disabled individual. Minvilla is unique in that it offers case management services on-site, and twenty-four hour staffing is in place as well. This ensures a high level of security for the residents. Social activities are also provided. The goal is for each tenant to reach his or her highest level of self-sufficiency.



Residents of Minvilla Manor enjoy a Christmas Party.

2015 Minvilla Manor Statistics

Minvilla Manor maintains a 93% daily utilization rate.

It should also be noted that Minvilla Manor has won numerous awards for historic preservation.

The VMC Holiday Store

In an effort to help low or no income individuals earn gifts for holiday giving, the VMC Holiday Store provides opportunities for interested parties to perform community service work for which they receive "points."

2015 Holiday Store Statistics

161 shoppers participated in this program. They earned points to buy holiday gifts for over 553 people.

They may then spend these "points" at the store which is set up seasonally and which offers a wide variety of new gift items for the shopping pleasure of the participants. This store allows individuals to preserve pride; it does not offer a handout. The store is staffed completely by volunteers and is stocked with donated merchandise.



Three little words...

Actually, they are big words. And they are words that have come to mean a lot to us over the past several years as our programming has matured beyond the simple shelter approach to the provision of life-changing services that require the participation of the client. You will see VMC using these words in our brochures, speeches, and written material about our work. These three words are: **Compassion, Accountability, Results!** We feel strongly that these words capture the essence of what VMC does and how we do it.

Here is what these words mean to us:

- Compassion:** meeting people where they are in their hour of greatest need, holding them in positive regard even as we see the possibility of a higher level of functioning and self-sufficiency.
- Accountability:** expecting those we serve to be an active part of their own recovery, expecting them to do what they agree to do as part of their plan.
- Results:** seeing those we serve move into a better life as people with housing and a plan for the future, seeing them maintain their housing with a long-term plan for sustainability.



2016 Staff

- | | |
|------------------|------------------|
| Nancy Bowen | Lisa Hutton |
| Selena Brewster | Opal King |
| Jamie Brown | Megan Lappas |
| Charles Clark | Roger Lyttleton |
| Gabe Cline | Roxie Moore |
| Jered Croom | Stacy Newton |
| Mary Fran Darwin | Caitlin Oaks |
| Bill Davidson | Raynisha Pankey |
| Nancy Douglas | Shanice Pankey |
| Dustin Heffner | Mary Beth Ramey |
| Vanessa Hensley | Zan Schriver |
| Dyrl Higdon | Bruce Spangler |
| Christy Howard | Peggylynn Towson |

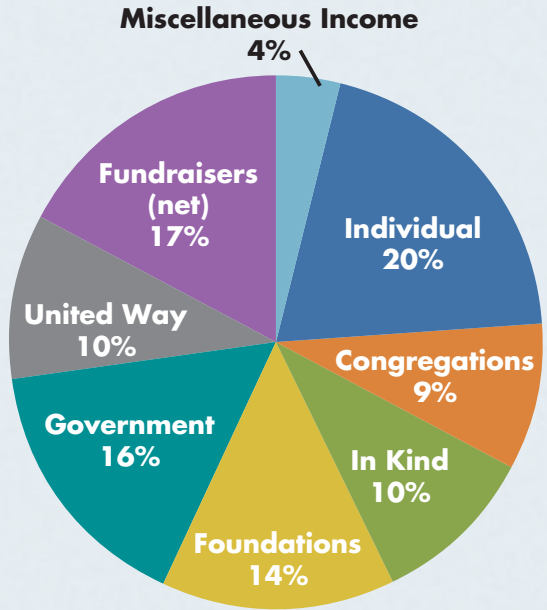
Our Financial Year in Review

Income Summary

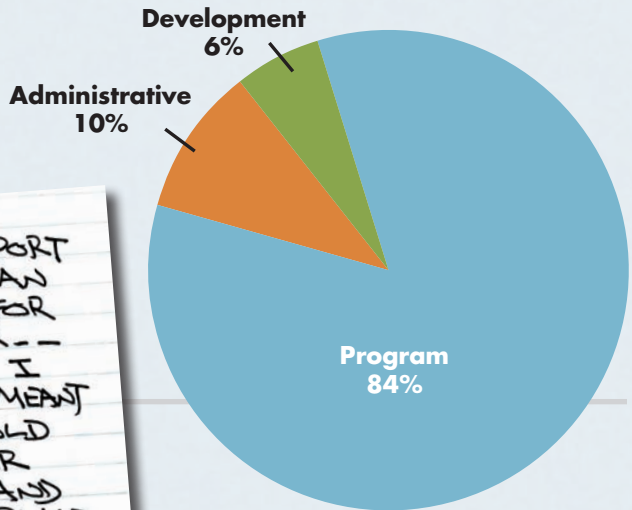
Individual	\$315,298.00
Congregations	143,933.00
In Kind Contributions	160,905.00
Foundations	209,950.00
Government	246,513.00
United Way	150,977.00
Fundraisers (net)	270,281.00
Miscellaneous Income	54,941.00

Total Income \$1,552,798.00

*Many corporate gifts are counted in fundraisers because they are given as event sponsorships.



VMC Expenses



WHY DO I SUPPORT VMC? THAT IS AN EASY QUESTION FOR ME TO ANSWER-- AS A BELIEVER I BELIEVE JESUS MEANT IT WHEN HE TOLD US TO LOVE OUR NEIGHBOR--- AND WHAT BETTER PLACE TO DO THAT THAN OUR VOLUNTEER MINISTRY CENTER--

Charlie Daniel



A Message from the Development Chairs

Through your generous support, the Volunteer Ministry Center has had another successful year helping to prevent homelessness in our community. We hope you will review the 2015 Annual Report, showing all that has been accomplished. None of this would be possible without each of our donors. Under the leadership of our outstanding staff and enhanced by many volunteers, VMC continues to grow what began in 1987.

Our signature event, Carry the Torch, featured best selling author

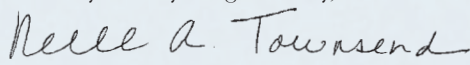
Sue Monk Kidd. Over 1000 guests enjoyed lunch and were charmed by her wit and warmth while raising funds to support VMC's programs and services.

Wine and Shine, the Don Sproles Memorial Dinner was a spirited evening of education and tastings of locally made moonshine and wine. A terrific silent and live auction topped off the evening. The planning of the 2016 event is well underway and will be in July at the Crowne Plaza. The venue change is due to the fact it has outgrown the Standard after only two years!

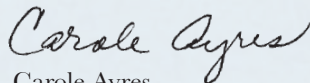
Our annual 5k Race and Dunkin' Donuts Run and Eat was a fun way to raise awareness and financial support for VMC. It was held this year in the Hardin Valley area and the change of location was well received. The 2016 event is planned for October 30 so mark your calendars!

The members of the Development Committee are hard working, dedicated and creative! We are grateful for their continued efforts towards the financial success of VMC. However, none of this would be possible without the support from our generous donors and involved community.

Thank you for your generosity,



Neill Albers Townsend



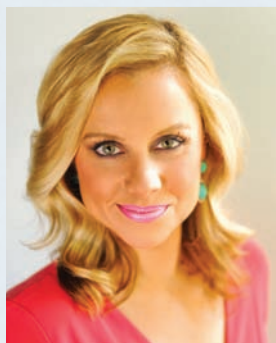
Carole Ayres



*Neill Albers Townsend, left, and Carole Ayres,
Co-Chairs of the Development Committee*



*Mayor Dan Brown,
Honorary Chair
for the 2015
Carry the Torch*



*Abby Ham and Russell Biven, Honorary Co-Chairs for
the 2015 VMC Dunkin' Donuts
Run and Eat 5K Race*



Fundraising Events

Carry the Torch Knoxville: Our 2015 event featured nationally known and New York Times best-selling author, Sue Monk Kidd, whose writings include *The Secret Life of Bees*, and *The Invention of Wings*. The sponsor reception the evening before the luncheon was hosted at the home of Carole and Joe Ayres. The luncheon, featuring a presentation by Sue Monk Kidd to over 1000 guests, was held at the Knoxville Convention Center. Former Mayor of the City of Knoxville, Dan Brown, served as Honorary Chair.



*Reception for Carry the Torch
Honorary Chair Mayor Dan Brown,
Sue Monk Kidd, Sandy Kidd,
Carry the Torch Committee Co-Chairs
Neill Albers Townsend and Peter Keese*



*Runners eating their Munchkins during
the VMC Dunkin' Donuts Run and Eat 5K.*

VMC 5K Race and Dunkin' Donuts Run and Eat: The VMC 5K Race and Dunkin' Donuts Run and Eat was held on November 1st at Hardin Valley Elementary School. Honorary Chairs were Russell Biven and Abby Ham from WBIR Channel 10. Participants ran a 5K and ate 24 Dunkin' Donuts Munchkins at a designated stop during the race. Individual runners, as well as teams, raced to win prizes and eat donuts. There were plenty of family activities which were enjoyed by all.



*Hunter Purnell
VMC Board Member*

“When I started working downtown and saw the need to help our homeless neighbors who wanted to make a change in their lives, I knew I needed to be involved with the Volunteer Ministry Center. VMC’s mission statement is simple yet clear: to prevent and end homelessness. VMC provides the avenues to make its mission happen through giving and serving.”

The Don Sproles Memorial Dinner: Wine and Shine: Sugarlands Distilling Company and the Crowne Plaza Knoxville were presenting sponsors for the second annual Wine and Shine event which took place at The Standard. Guests enjoyed tasting fine wines with a special presentation by Carol Costello, Ph.D. Director of the UT Culinary Wine and Beer Program. The expert staff from Sugarlands Distilling Company shared information about local moonshines and provided samplings of those. Add in great food from the Crowne Plaza and a live and silent auction, and it was a fun night for all.



*Blue Grass Music was enjoyed
by the guests attending the
Don Sproles Memorial Dinner:
Wine and Shine*

Volunteer Program

Our volunteer program continues to grow every year. We have a monthly “Get Acquainted With VMC” every 3rd Tuesday of the month. We encourage anyone who is interested in volunteering to please notify the Development Department and join us. We also have a church engagement program aimed at solidifying our current church relationships and developing new ones.

Supporting VMC and Ways to Give

Gifts of Cash and/or Stock

Gifts of stock as well as gifts of cash are certainly appreciated. With gifts of stock you might benefit by not having to pay any capital gains tax on the increase in value of the stock. You might also be eligible to receive an income tax charitable deduction for the fair market value of the stock when you make the gift.

Charitable Giving Through Wills

The easiest way to make a charitable gift is by an outright bequest of cash in your will. Bequests may be specific amounts or assets and may be proportional or residual in nature.

Savings Bonds

A donation of savings bonds through your will can support VMC's continuing efforts.

Endowment Fund

Contributions to VMC's Endowment Fund help build our future and provide sustainability for the programs which continue to produce highly successful results in preventing and ending homelessness.



Ken Knight
VMC Board Member

“The Volunteer Ministry Center helps people by giving them the opportunity to refocus their lives in a positive direction while ensuring those being helped are fulfilling their responsibility to be part of the process of improvement. VMC is changing people's lives in a way that enables them to have dignity and pride in accomplishment.”

Financial Accounts

Most checking, savings and brokerage accounts can be bequeathed to the Volunteer Ministry Center, Inc. through a simple “payable on death” designation with your financial institution.

Matching Gifts

Participating companies match the amount of dollars given by employees to the qualifying charity of their choice. The company gives the matching gift only after the employee donor has made their gift and completed the company's matching gift process.

IRAs and Retirement Plans

If you have funds in an IRA or employer-sponsored retirement plan, you can name the Volunteer Ministry Center, Inc. as a beneficiary. Naming VMC as primary, partial, or contingent beneficiary may provide tax savings.

Charitable Trusts and Charitable Annuities

Charitable Trusts and Charitable Annuities are additional avenues for giving to the Volunteer Ministry Center. For more information concerning these methods of Planned Giving, please contact the VMC Development Department at 865-524-3926 x229.

With Gratitude — *Our Donors*



Bob and Molly Joy

“The Volunteer Ministry Center refers to those served as “neighbors.” We believe that a community is a group of people who are neighbors and in a compassionate community, neighbors help neighbors! We are pleased to be part of VMC’s compassionate community. We support VMC because it is effective as 93% of homeless neighbors who achieve housing are able to retain it.”

\$25,000 and Over

Anonymous (1)
Marty and Ann Brown
City of Knoxville
First Baptist Church
Gene & Florence Monday Foundation
Pilot Corporation
Pilot Travel Centers, LLC
St. John’s Cathedral
Richard Swan
The Aslan Foundation
The Haslam Family Foundation, Inc.

\$10,000-\$24,999

Anonymous (1)
First Presbyterian Church
Home Federal Bank
Jane L. Pettway Foundation
David and Jeanne Claire Jones
Ray and Ginger Kielarowski
John and Judi Nelson
Marty Smith
Westminster Presbyterian Church

\$5,000-\$9,999

Anonymous (1)
Steve and Ann Bailey
Judy Burnette
Betsey Bush
Charis Foundation, Inc.
Clayton Family Foundation
Cornerstone Foundation of Knoxville
Randy and Robin Gibson
Grace Baptist Church
Lee and Helen Grant
J. P. and Katherine Roddy Sr. Fund
Breese and Kathryn Johnson
Bob and Molly Joy
Peter and Helen Keese
LHP Capital
Lusid Media
Powell and Susan Partridge
Rembco Geotechnical Contractors
Claude & Elizabeth Robinson Trust
Sequoyah Hills Presbyterian Church
Rob Tannert and Kay Bradley
Frank and Sheila White

\$2,500-\$4,999

Anonymous (1)
Joseph and Carole Ayres
Brothers Bedding, LLC
Steve and Mary Ellen Brewington
Cedar Springs Presbyterian Church
Central Baptist Church of Bearden

David and Emily Cox
Michael and Sallie Ehrhardt
Farragut Presbyterian Church
Howard Filston and Kay Stouff Filston
First Tennessee Foundation
Jim Given
David and Lindsey Harrell
Tom and Judy Hodge
Robert and Carney Ivy
Mary Klimas
Lakeside Tavern
Claude Mahan
Bill and Deborah Mulligan
Jere Ownby and Melissa Gill
Bill and Nancy Partridge
Fred and Rose Perkinson
Pinnacle Financial Group
Don and Nancy Preston
Publix Super Markets Charities
Doug and Jeanette Ramey
Robert Lee Weiss Foundation
Ken and Patra Rule
S & H Crown and Bridge, Inc.
Second Presbyterian Church
Sarah Stowers
Tennova Healthcare
Tom McCarley and Denise Moretz
John and Neill Townsend
Linda Van Beke
Wasserman Construction Co., LLC

\$1,000-\$2,499

Anonymous (6)
Akima Club Inc.
Bud Albers
Jim and Gena Allington
Beth Anderson
Linda Bailey
Joe and Jenny Bell
Herb and Mary Berl
Dorothy Bryson
Lisa Buckingham
Chariots Of Hire, Inc.
Church of the Good Samaritan
Charlie and Patsy Daniel
Denark Construction
Don and Nancy Dunning
Stephanie Durman
Marcia Elam
Dan and Moira Ely
Episcopal Church of the Ascension
The Diocese of East Tennessee
Faith Promise Church
Fifth Third Bank
First Christian Church AKA The Table

Fountain City United Methodist Church
Mack and Cheryl Gentry
Mike Gerard
Patricia Grace
Wahid and Samia Hanna
James Hawk
Matt and Sara Heaton
Norma Holmes
Immaculate Conception
Catholic Church
Interstate Mechanical Contractors, Inc
Billy and Edna Ivey
J. Smith Lanier & Co., Inc.
Karen Johnson
Jimmy and Debbie Jones
Bob and Ellie Kassem
Kenneth and Jamie Keith
Lake Hills Presbyterian Church
Laurel Church of Christ
Sharon Lee
LMU Duncan School Of Law
James and Lindsay McDonough
The Melrose Foundation
Miller & Drozdowski
William and Sheri Pender
Practice Solutions, Inc.
Joe and Sharon Pryse
Hunter and Emily Purnell
Raymond James and Associates, Inc.
John and Liz Rea
Retirement Planning Services
Mary Ann Rinearson
Martin and Nikki Roberson
Rod and Julie Roe
Rogers Group, Inc.
Presbyterian Women of Second
Presbyterian Church
Carter and Gale Shippe
South Knoxville Church of God
Bruce and Phyllis Spangler
St. James Episcopal Church
St. John’s Lutheran Church
Connie Steele
Stowers Machinery Corporation
Joe and Mary Sullivan
John Owens and Karen Sundback
The Redeemed Church
The Trust Company
Dick and Irene Townsend
Bruce and Penny Tschantz
University of Tennessee College of
Social Work
Carl and Gail Van Hoozier
Georgiana Fry Vines
White Realty & Service Corp.

With Gratitude — Our Donors



*A big smile says it all –
a Key, a Keychain,
and a Home!*

\$500-\$999

Anonymous (2)
ABRA Auto Body & Glass
Richard and Bonnie Anders
Pat and Jane Armstrong
Jerry and Robyn Askew
Phillip and Judy Barnette
Bearden United Methodist Church
Paul and Mary Lee Bergeron
Brian Blind
J.C. Bowman
Kurt Brandt and Dawn Huff
John and Kathy Buckingham
Sandra Burdick
John and Sandra Butler
Mary Casnelli
Jimmy and Ileen Cheek
Church of the Good Shepherd
Bill and Betty Coley
James and Sandra Comella
Pye and Susan Conway
Tom and Mindy Coulter
Haley Crow
Carter and Charlotte Davis
Robert and Jamie DeNovo
Warren and Diane Edwards
Bill Elmore
Erin Presbyterian Church
Andrew and Melissa Everett
Dean and Mary Farmer
Gary and Phyllis Gietschlag
Mike and Jo Ann Guidry
Michelle Hardin
Jim and Janet Harrison
Thomas Harrison
Roy Herron
Josh and Amy Hethcox
Fred and Harriet Hodge
Sam and Nancy Hodnett
Julia Huster
Tom and Becky Jackson
Rick and Becky Jenkins
Tom and Maria Jernigan
John XXIII University Parish
Dale and Barbara Keasling
Reggie and Sally Keaton
Gwendolyn Kerney
Kiwanis Club of West Knoxville

Kramer Rayson LLP
Kroger
Jack and Sylvia Lacey
Leadership By Design
Bo and Jan Lewis
Ted and Katherine Lewis
Richard Lillie
Charles Lindsey and Sharon Cassada
David and Anne Lovett
Mary Lynch
David and Sandy Martin
Mark Rennich and Vicki Mayfield
Angie McCamy
Leonard and Betty McKeenan
Greg and Lee Meadows
Jim and Sheila Michel
Sis Mitchell
Buddy and Penny Mitchell
Louis and Emily Moran
Joel and Linda Morris
Edward and Orpha Murray
Duane and Sarah Nielsen
Marie O'Neill
David and Shawn Owens
David Patterson and
Melanie McGhee
Kent Peebles
Jan and Sylvia Peters
Mary Rayson
Bill and Bonnie Rogers
Andrew and Tracy Scruggs
Steve and Jeanie Sharp
Duane and Angela Simmons
Andrew and Caroline Smith
Karen Sproles
Harry and Liz Stowers
Mark and Connie Taylor
Team Health
Clif and Nan Tennisson
The Crowne Plaza
The Nalls Group, LLC
Jackie Theg
Tootsie Roll Industries, Inc.
Bill Tuberville and Susan Stalgaitis
Guy and Mary Frances Tucker
Jim and Flo Ullrich
John and Lauren Van Dyke
Paul Von Weckmann
Vulcan Materials Company
James and Jane Walker
Wilma Ward
Robert Devault and Julia Watts
Rick and Ginny Weatherstone
Jim and Judy Whedbee
Wings Xpress
Brenda Wood
Craig and Sue Wrisberg

\$100-\$499

Anonymous (15)
Ray Abbas
Allen and Debby Abernathy
Norbert Ackermann
Al and Margo Akerman
Judy Akers
Ben Alford and Sarah Sheppeard
Paul and Kathy Ambrose
Kara Amouyal
James and Adrienne Anderson
Nicholas and Elizabeth Anderson
Andrew Bogle Chapter NSDAR
Gary and Deborah Andrews
David and Sandy Ange

Rich and Mary Antonucci
Anne Armstrong
David and Meg Arning
Charles Ault
David Ault
Duane Ausetts
Hugh Austin
Dorothy Avers
Tommy and Midge Ayres
H. L. Bacon
Joyce Bacon
Amy Bailey
Alan Ballew and Ann Holtz
Bank Of America
Jack and Laurie Barron
Beecher and Kim Bartlett
Margaret Bartuch
Sandy and Kreis Beall
Joe and Catherine Beals
Ken and Denise Bean
Laura Beardsley
Michael and Debbie Bell
Marilyn Binhammer
Freddi Birdwell
Bob and Jewell Birdwell
Jan Bishop
William and Candice Black
Al and Lisa Blakley
David and Jessica Bocangel
Wendell and Rachel Boertje
John and Lorine Bowe
Nancy Bowen
Walt and Debra Bower
Stephen and Sharon Bowman
Freddie Brabson
Fred and Susan Brackney
Charles Brakebill
Charles Bramwell
Robert and Martha Breazeale
Andrea Brewer
Jenny Bridwell
Pat Bright
Judi Brookshire
William and Amy Broom, III
Monte and Jan Broome
Buford and Faye Brown
Dan and Cathy Brown
James and Barbara Brown
Jim Browne
Brandon and Danielle Browning
Joe and Jeannette Brownlee
Mark and Jenny Buckingham
Ed and Caroline Buckner
Linwood Budlong and
Barbara Bolton-Budlong
Dorothy Buhl
Burcham Benefits, LLC
Vance and Martha Burkey
Stan and Barbara Burrows
Gayle Bustin
Nancy Butler
C & J Wealth Advisors
Bob and Carolyn Calloway
Philip and Lori Calvert
Bob and Ruth Campbell
Bill and Cathy Campbell
Robert and Marie Cantrell
Ruthie Carey
Jerry and Scott Carley
Suzanne Carriere
Fred and Mary Carter
Gary and Pat Chambers
Ray and Cindy Chan

With Gratitude — Our Donors



The VMC keychain is presented to clients upon achieving housing.

Barry Goldman
Barry Goldman and Janit Greenwood
Bev and Katy Gooch
Joe and Betty Googe
Nancy Goslee
Sally Gouffon
David and Janet Greene
Judy Greenwood
Duane and Marsha Grieve
Craig and Donna Griffith
Lucille Griffio
Kevin and Melinda Grimac
Diane Gross
Spencer and Teresa Gross
Allan and Gail Grossman
Keith and Kim Grubb
Bradford and Joy Guilford
Chris and Jennifer Hackett
Karen Hackett
Charles and JoAnn Hackler
Lissa Hailey
Stephen and Kathryn Hall
Thomas and Rachel Hallam
Andrew Hampson
Becky Hancock
Mary Ann Haney
Grant and Ann Hansen
A. B. and Clara Hardin
Elisha Harig-Blaine
Andrew and Angela Harper
John and Margaret Harrison
Robert and Amelia Hawkins
Jacque Hawks
John and Linda Haynes
Dennis and Kathy Hayward
Gil and Penni Heinsohn
Alicia Helm
Bruce and Cathy Henschen
Heska Amuna Synagogue
Joanne Hibbs
Christy Hickman
Shirley Hileman
Barbara Hillard
Greg and Vicki Hinkel
Hugh and Janice Hixson
Dan and Mary Holbrook
Keith and Jacqueline Holdbrooks
Jack and Jenny Holden
Joan Holladay
Marsha Hollingsworth
Clyde and Connie Holmes
John and Karin Hoover
Marv and Janie House
Davis Howser
HT Hackney
Charles and Sandra Huddleston
Rocio Huet
Karen Hughes
Joseph and Ann Huie
Pat Hunsicker
Dennis and Susie Hunter
Jim and Immogene Hutson
Doris Ivie
Wes and Norma James
Jay and Mary Jellison
Steve and Michele Jessen
Don and Barbara Jett
Ewing and Lucy Johnson
Howdy and Barbara Johnston
Steven and Anne Jones
Seth and Sally Judd
Jim and Ginger Justice
Will and Kelley Karnes

\$100-\$499 cont

Cherokee Hills Garden Club
John Chesney
Chris and Lin Christenberry
Vicki Christensen
Kenny and Debbie Christiansen
Church Of The Ascension
Alan and Kim Ciukowski
Kay Clayton
Barry and Madge Cleveland
Ronald Cloud and Tee Ezell
Jay Cobble
Katherine Cockerham
Cokesbury United Methodist Women
Concord UMC - Friendship Club
Concord United Methodist Church
Concord United Methodist
Foundations Class
Lee and Jackie Congleton
George Conner
Max and Virginia Conner
Consolidated Nuclear Security, LLC
Tim and Carol Coode
Gerald and Linda Cook
Rick and Bonnie Cooper
James and Martha Coppock
Bettie Corey
Sylvia Countess
Nancy Counts
Michele Cox
David and Elizabeth Craig
Wes and Christine Crow
Budd and Callie Cullom
Cumberland Baptist Church
Cumberland Baptist Church - Willing
Workers SS Class
Jo Lynn Cunningham
Charles and Carol Currier
Mary Fran Darwin
Robert and Lana Daverman
Anne Davidson
Jean Davidson
LaVance Davis
Sarah Davis
Cindy Day
Alex De Trana
Sharon Deaver
James and Michelle Decker
Bob and Nancy DeNovo
Harold and Lucinda Denton
Sue Dilworth
Ervin and Taylor Dinsmore
Marvin and Karen Dixon
Becky Dockery
Elsie Dodson
Dogwood Animal Hospital PC
Tom and Martha Dolinak
Donald and Carolyn Dougall
James and Betty Dougherty
John and Le Anne Dougherty
Jack Draper
Alex and Elizabeth Dryburgh
Pamela Duncan
Michael Dunthorn
Donald and Sarah Durham
Len and Becky Dwarshuis
Karen Eberle
Martha Edington
David Eldridge
Douglas and Mary Emblar
Equality Coalition Housing
Opportunity
Deborah Estep
Robert and Jan Evridge
Jim Farmer
Farragut West Knox Chamber Of
Commerce
Mary Ann Fennell
Huston and Nancy Finley
First Cumberland Presbyterian
Church - West Circle
First Presbyterian Church -
Presbyterian Women
Dan and Kim Fleming
Rodney and Mary Franks
FMB Advertising
Coy and Kathryn Freeman
Don and Suzanne Freeman
Bill and Julie Fulkerson
Carol Gallagher
Bill Gardner
Susan Garlington
Donna Geckler-Solod
Edie Gilboy
Larry and Kristie Giordano
Jenny Glover
Michael and Cammy Glover
Jonathan and Leslie Godfrey

With Gratitude — Our Donors

\$100-\$499 *cont*

Steve and Lauren Karnitz
 Bill and Connie Keeler
 Robert and Janice Kell
 Michael and Norma Kelley
 Nancy Kelly
 Dick and Sarah Kelso
 Cory and Terry Keltner
 Eldridge and Lynda Kennedy
 Roger and Diana Kilburn
 Kimberly Clark Foundation
 Stephen and Susan Kiss
 Morris and Sandra Kizer
 Ken and Tammy Knight
 Maribel Koella
 Stephen Koella
 Stevens Koella
 Robert and Martha Koho
 Chelsea Krahulik
 Wayne and Linda Kramer
 Bob and Helen Large
 David LaRose
 James Larrabee
 Jeff Larsen
 Niles and Nancy Larson
 Sid and Donna Law
 Sherri Lee
 George and Bobbie Legg
 Gary and Terry Lethco
 Cheryl Light
 David Liles
 Susan Little
 Kristine Lohr
 Debra London
 Barbara Loveday
 John and Ginny Lyon
 Matt and Angie Lyon
 William and Gay Lyons
 Joseph and Ellen Macek
 Ray and Arleen Malcolm
 Lois Malkemes
 Nathan and Vicki Malone
 Keith and Lisa Mandrell
 Courtney Manrod
 Frank and Avery Maples
 Rosa Mar
 Susanne Marcum
 Trevor and Mary Martin
 John and Lillian Mashburn
 Angela Masini
 Julie Massey
 Bonnie Mauldin
 Ronald and Jean Mayer
 Anne Maynard
 Rol McCammon
 Tricia McClam
 Kim McClamroch
 Barbara McCoin
 William and Carolyn McConnell
 Tom and Tere McDonough
 Tom and Nancy McGalliard
 Nancy McGlasson
 Carol McGlothlin
 Susan McGuire
 William and Susan McKissick
 Heather McLellan
 Trent and Louise McNeely
 Heather McRedmond
 Wade and Carolyn Meadows
 Alan Mealka and Elsbeth Freeman
 Mark and Pat Medley
 Greg and Cheryl Mesing



*Case Manager Dyrl Higdon with
 VMC Resource Center members who completed the
 Personal Responsibility classes.*

Richard and Lee Metelka
 David Denton and Judith Meyer
 Ann Michael
 Edward and Susan Michaud
 Harold and Betty Middlebrook
 Rolf and Denise Migun
 Laurence and Carol Miller
 Mancil and Arlys Milligan
 Albert and Carroll Minor
 Anne Mintz
 Cindy Moffett
 Robert and Sydnor Money
 Charles and Nicole Montgomery
 Louise Moore
 Meredith Moore
 Scott and Jaynie Moore
 David and Amy Morehous
 Lynn and Frances Morehous
 Mark and Doris Moreland
 Cathy Morrison
 Bill and Ginny Morrow
 Judy Morton
 Shelia Muenzer
 Mary Muir
 John and Nancy Munro
 Daniel and Suzan Murphy
 Bob and Sue Murrian
 Norm and Ann Naylor
 J. T. and Carolyn Neighbors
 Anne Nelson
 Shirley Nicholson
 Carolyn Noey
 Doby Noles
 Roger and Carol Nooe
 Mike Norwood
 Jeffrey and Susan Novinger
 Gary and Myra Nunley
 Greg and Ann O'Connor
 John and Betsy O'Connor
 Gerry and Carol O'Farrell
 Elizabeth Offringa
 Tom and Beth Ogburn
 Ann Orr
 Bill and Janet Osteen
 Carol Ottaviano
 Randall and Carol Overbey
 Gene and Lyn Overholt

Brad and Heather Overton
 Bimal and Annette Pal
 Mary Palmer
 Lee and Linda Parris
 Scott and Angela Partelow
 Ed and Corinne Patrick
 Virginia Patterson
 Reuben and Barbara Pelot
 Owen and Thea Peterson
 Marshall Peterson and Linda Blanc
 Norma Peterson
 Greg and Gayle Phelps
 Larry Phelps
 Sara Phillips
 Allan and Beverly Philp
 Lezah Pinnell
 George and Stephanie Piper
 James Poorbaugh
 Bill and Fran Potter
 Judy Poulson
 PRI Of East TN, Inc.
 Marty Pryor
 Pureline Design & Print, Inc.
 King and Denise Purnell
 Mark and Mary Beth Ramey
 Michael and Heather Ramey
 David and Morgan Rausch
 Realty Executive Associates Inc.
 David & Willa Reister
 Ronda Redden Reitz
 Charles and Trudy Reynolds
 John and Marjorie Reynolds
 Kay Reynolds
 Donald and Susan Rhyne
 Ron and Mary Rimer
 John and Mary Jane Ripley
 Karen Roberts
 John Robertson
 Charles and Sally Robinette
 Alex and Phyllis Robinson
 Franklin and Helen Robinson
 John and Ann Rochester
 Marilyn Roddy
 Julie Rogers
 Ginny Rogers
 Robert Rose
 John and Lois Ross

With Gratitude — Our Donors

\$100-\$499 *cont*

Stephen and Carol Rothschild
Sam and Gail Rotolo
Russell Rotondo and
Cynthia Kang-Rotondo
Tommie Rowe
Terry and Susan Rowland
Pete and Ginny Rowlett
William and Elisabeth Rukeyser
Lois Russell
Milton Russell
Linda Rutherford
Joyce Ryan
Roger and Bennie Salem
Bette Sanders
Van and Anice Sanks
William and Elisabeth Sansom
Finbarr Saunders and Ellen Bebb
Zane and Terry Scarlett
Alton and Jo Schexnayder
Carol Schmid
Thomas and Charlotte Schumpert
Eric and Jodie Schwarzentraub
Carolyn Schwenn
Nan Scott
Second Presbyterian Church - Faith,
Science & Future Class
Secret Angels Trust
Terry and Robin Self
Arthur and Susan Seymour
Gregg and Sarah Sharp
Jennifer Sheehan
Paul and Ellen Shelton
George & Julia Shiflett
Randy Shoun
Paige Sibold
Jon and Beverly Simons
Alan Sims
Ed and Jeanie Sims
Bob and Margaret Slattery
Ira Sliger
Don and Cathy Sloan
Ann Smith
Lynn Smith
Robert and Katherine Smithwick
South College
Jonathan and Mary Sowell
Robert and Jackie Spining
Ed and Donna Spray
Anne L. Sprouse
St. Mark United Methodist Women
St. Mary's Convent
Wayne and Heather Staggs
Grant and Rhoni Standefer
Gail Sterchi
John and Nancy Stewart
Nancy Stivers
Tere Stouffer
Duffy and Suzanne Stowers
Amy Styles
John and Leah Swaggerty
Karen Swander

Brad and Carrie Sweet
Walter and Laura Tappan
Mary Sue Tavino
John Taylor and Karen McKinney
Karen Taylor
Edd and Carol Templeton
John and Leslie Testerman
Helen Tews
The Assurance Center Of
Oak Ridge, Inc
The Knoxville Friday Book Club
Carol Thiesing
Pattie Thiele
Susie Thomas
James and Mariann Thuesen
TSCHSW Mid East Council
Mary Alice Tucker
Richardson and Marilyn Turner
Daniel Van Zandt
Nicholas and Susan Vanacore
Megan Venable
Sam and Mary Ann Venable
James and Janet Villotti
Bill and Dotty Vinson
Gary Wade
James Hudson and Becky Wade
Alma Lee Walker
James and Elizabeth Wall
Lacy Wallace
Martha Wallus
Monty and Elizabeth Walton
Shannon Walworth
Greg and Marie Ward
Rebecca Ward
Eddie and Elaine Warren
Nancy Watkins
Janice Way
Kurt and Carolyn Weigel
Linda Welch
Jay and Erin Wessel
West Knoxville Friends Meeting
Sue West
Joan Western
John and Celeste Whaley
Haley Whitaker
Douglas White
Harvey and Karen White
Joyce Whitfield
Martha Wike
Dan and Amy Wilbanks
Don and Janis Williams
Marsey Williams
Mintie Willson
Carol Wilson
Ron and Betty Wollard
Burg Woody
William and Jonelle Wooldridge
Louis and Janice Woolf
Rita Wooten
Dale and Wendy Wortham
James and Linda Yates
Myra Yeatman

David and Delores Yoder
William and Cathy Youmans
George and Kammy Young
Kimberli and Charles Zirkle

Corporate In-Kind

All Occasions Party Rentals
Consolidated Nuclear Security, LLC
Cabin2 Productions
Crown Plaza Knoxville
Draft Agency
Dunkin' Donuts
Earthfare
f/32 Photo
Highlands Brewing Company
Lunchbox Market & Café
Moe's Southwest Grill
Merle 96.7 FM
Northshore Brasserie
The Oliver Hotel
Patricia Nash
Pilot Travel Centers, LLC
River Sports Outfitters
The Shopper News
St. John's Lutheran Church
Stellar Visions & Sound
Sugarlands Distilling Company
Uncle Lems Mountain Outfitters
Sam and Mary Ann Venable
WBIR-TV Channel 10
WindRiver/Citico's



*799 housing placements as of
December 30, 2015 with
more to come in 2016!*

**The Volunteer Ministry Center
is proud that 100% of its Board members financially support VMC.**

The VMC Annual Report contains a list of all gifts received between January 1, 2015 and December 31, 2015. Every effort has been made to ensure that these lists are accurate and complete. If your name was omitted inadvertently, or if it appears incorrectly, please accept our apologies and notify the Development staff at 524-3926 x229.



Volunteer Ministry Center
Compassion • Accountability • Results

P.O. Box 325
Knoxville, TN 37901-0325
865-524-3926

Non-Profit Org.
U.S. POSTAGE
PAID
Knoxville, TN
Permit No. 981

Volunteer Ministry Center

2015 Annual Report